

THE SHED Press Release

THE **BLOOMBERG** BUILDING
545 West 30th Street
New York, NY 10001

Phases and the In-Betweens, a website intervention from a disability-
artistry perspective by **Brothers Sick, Yo-Yo Lin, and danilo machado**,
Premieres Wednesday, January 13 through February 11

For more information, please contact:

The 12th Installment of The Shed's *Up Close* Online Series

Christina Riley
Senior Publicist
(646) 876-6865
christina.riley@theshed.org

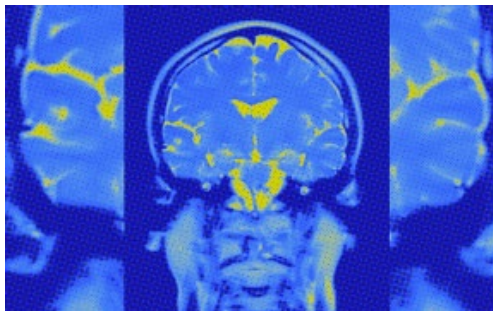


Image Description: A cross section of a brain scan imaged in blue and yellow in a central column of the frame overlaid on a close up view of the same scan that fills the narrow right and left margins of the image to its edges. Courtesy the artists.

New York, NY, January 13, 2021—Artists **Brothers Sick, Yo-Yo Lin, and danilo machado** premiere their new collaborative, monthlong digital project *Phases and the In-Betweens* as the 12th commission of The Shed's *Up Close* online artworks series on Wednesday, January 13 on The Shed's website at theshed.org/phases. The project runs through February 11 and is free to view. The artists will also host a special event live DJ set and movement workshop on January 28 at 8 pm via Zoom.

Phases and the In-Betweens evolves over a complete lunar cycle, starting with the new moon on January 13 and changing on January 20 and 28 and February 4 and 11 according to the phases of the moon, to reflect on (and criticize) the “phases of reopening” as set up by governmental agencies as part of the so-called “return to normal.” With the incorporation of simple generative elements including looped animations and a video, this project disrupts the usual vertical, linear flow of The Shed's website pages. The intervention, a reflection on collective care in pandemic times, presents an experience of the pandemic from a disability-artistry perspective.

“For this project, at its core, we really wanted to think about what care looks like in private and public and how that relationship of care is enacted during a global pandemic,” said Brothers Sick. “From there, we reference different elements of care in isolation and public, layering and blurring the intimacy of illness and public life during precious and precarious outings. We layer and blur hierarchies of material, media, and experience. For the format, we really wanted to explore these ever-present ideas of care and sickness through a broadened presentation of digital art sharing and making, across sick, disabled, Crip time, pandemic time, celestial space and time, and across ourselves in our care networks with our collaborators.”

THE SHED
THE BLOOMBERG BUILDING
545 West 30th Street
New York, NY 10001

Using images taken during procedures, tests, and treatments in hospitals, combined with writing, poetic description, and video footage, the artists showcase the heightened anxiety of experiencing the “outside” world in a predominantly medicalized way during the pandemic, as the public world has shifted radically between shutdowns and Black Lives Matter protests. Critically engaging with the state’s New York Forward plan to reopen NYC according to four “phases,” alongside the frameworks of disabled/crip time, sick time, and pandemic time, the piece takes a look at the disablement further imposed on communities who identify as sick/ill/disabled during a pandemic.

DJ Queer Shoulders (danilo machado) will host a live moon-themed DJ set including visuals by Yo-Yo Lin and an accessible dance/movement workshop inspired by the moon phases led by Lin on January 28 at 8 pm EST as part of *Phases and the In-Betweens*. This event is hosted via Zoom and is free to the public with advance registration. Live audio describers, ASL, and CART will be available.

About The Artists

Ezra and Noah Benus are artists who founded **Brothers Sick**, a sibling artistic collaboration on disability justice, illness, and care. Ezra is an artist, educator, and curator, who addresses a range of themes in his art such as time, care, pain, and illness/health by tapping into his background and experience in Jewish studies, art history, and the embodiment of disability. He engages the self as a site where social, political, and spiritual forces collide through tapping into bodily knowledge and social constructions around values of normativity. He is currently a SHIFT Artist in Residence at EFA Project Space. Noah is a New York City-based photographer interested in exploring activism through social, educational, and political works. As a disabled artist, he ventures to reveal often overlooked moments through modes of portraiture, photojournalism, and studio works. His photographic works use alternative processes, and analog and digital formats to educate and advocate for access. Currently, he is completing his MA in visual arts education (K – 12) at CCNY.

Yo-Yo Lin is a Taiwanese American, interdisciplinary media artist who explores the possibilities of self-knowledge in the context of emerging, embodied technologies. She often uses video, animation, live performance, and lush sound design to create what she calls meditative “memoryscapes.” Her current work reveals and re-values the complex realities of living with chronic illness. Through researching and developing methodologies in reclaiming chronic health trauma, she investigates the generative nature of the ill/disabled body-mind and facilitates sites for community-centered abundance. She was a 2019 “Access” Artist in Residence at Eyebeam and has shown her work at SXSW, New York Film Festival, and the Allied Media Conference. Lin is the co-founder of ROTATIONS, a collaborative movement practice working towards deepening and challenging our understanding of artistry, disability, and access. She finds a place and community in New York, Los Angeles, and Taipei.

Born in Medellín, Colombia, **danilo machado** is a poet, curator, and critic on occupied land interested in language’s potential for revealing tenderness, erasure, and relationships to power. A 2020 – 21 Poetry Project Emerge-Surface-Be Fellow, their writing has been featured in *Hyperallergic*, the *Brooklyn Rail*, *ArtCritical*, and *TAYO Literary Magazine* among others. machado is the author of *The Post Post*

THE SHED
THE BLOOMBERG BUILDING
545 West 30th Street
New York, NY 10001

Post newsletter and has contributed writing to exhibitions at CUE Art Foundation, No Longer Empty, and Abrons Art Center. A producer of public programs at the Brooklyn Museum, Machado is also the curator of the exhibitions *Otherwise Obscured: Erasure in Body and Text* (Franklin Street Works, 2019 – 20) and the upcoming *support structures*, featuring the 2019 – 20 cohort of Art Beyond Sight's Art and Disability Residency. Machado is the co-founder and co-curator of the reading series Maracuyá Peach and the chapbook/broadside fundraiser *already felt: poems in revolt & bounty*. They are working to show up with care for their communities.

Current Programming

Howardena Pindell:Rope/Fire/Water, an exhibition on the brutality of racism and the healing power of art, is on view at The Shed through April 11, 2021. For ticketing, safety, and further details visit theshed.org.

Support

Up Close is supported by M&T Bank, the Stavros Niarchos Foundation (SNF), and public funds from the New York City Department of Cultural Affairs in partnership with the City Council.

The creation of new work at The Shed is generously supported by the Lizzie and Jonathan Tisch Commissioning Fund and the Shed Commissioners. The Shed is connected by Altice.

From Our Sponsor

M&T Bank is The Founding Bank of The Shed and has supported the organization since the beginning. M&T Bank is pleased to continue its support of The Shed with *Up Close*, a series of digital commissions born from The Shed's dedication to serving its communities during the coronavirus pandemic and beyond.

About The Shed

The Shed is a new cultural institution of and for the 21st century. We produce and welcome innovative art and ideas, across all forms of creativity, to build a shared understanding of our rapidly changing world and a more equitable society. In our highly adaptable building on Manhattan's west side, The Shed brings together established and emerging artists to create new work in fields ranging from pop to classical music, painting to digital media, theater to literature, and sculpture to dance. We seek opportunities to collaborate with cultural peers and community organizations, work with like-minded partners, and provide unique spaces for private events. As an independent nonprofit that values invention, equity, and generosity, we are committed to advancing art forms, addressing the urgent issues of our time, and making our work impactful, sustainable, and relevant to the local community, the cultural sector, New York City, and beyond.