
THE SHED Press Release

THE **BLOOMBERG** BUILDING
545 West 30th Street
New York, NY 10001

THE SHED PRESENTS *THE BREAKDOWN ODYSSEY BY MS. BOOGIE*

An intimate, one-night-only reimagining of the rapper's groundbreaking album in The Shed's Griffin Theater, September 14, 2024

Member tickets go on sale today, August 20; general tickets on sale August 22

For more information, please contact:

Christina Riley
christina.riley@theshed.org

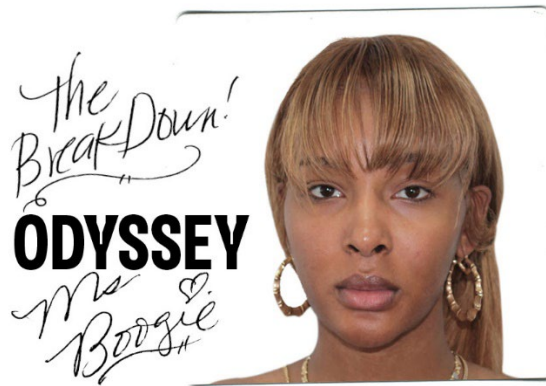


Photo courtesy Ms. Boogie

August 20, 2024 – In an exclusive engagement, The Shed presents Brooklyn-based rapper **Ms. Boogie** in a two-concert, one-night-only performance of her debut album, [The Breakdown](#), on September 14, live in The Shed's Griffin Theater with sets at 7 pm and 9:30 pm. Ms. Boogie will perform the album in its entirety alongside Minneapolis-based producer M. Jamison. Together, they will premiere never-before-heard remixes and fresh takes for a full sonic experience of this transformative album that addresses the exclusion of Black trans women in hip hop culture and the world.

"Being able to add body movement to *The Breakdown* album is yet another opportunity to illustrate the narratives and stories told in this project. These stories of perseverance, interfamilial dynamics, mortality, deserving of love and metamorphosis are often told through a partial lens within the realm of hip hop," said Ms. Boogie. "As an artist, I look forward to broadening the schemes and angles in which rap is performed, as well as expanding the ideas surrounding which bodies are traditionally included in hip hop culture."

In *The Breakdown Odyssey*, Ms. Boogie explores each song with her dance and vocals, guided by a suspenseful and cosmic sequence of automated sounds by M. Jamison. With a blend of nostalgic, classic rap instrumentals and modern essences, Ms. Boogie opens a portal to deliver two concerts of explicit, raw, boastful lyricism traditional to the genre, except this time with

bodies and voices like hers at the forefront. Additional support for the piece includes Justin Raul Baez (El Joven) as sound designer and Cassius Antonio Cruz as a contributing lyrical composer on the album.

“Ms. Boogie is a transformative artist whose work both shapes and creates the culture we love in New York City,” said **Madani Younis**, The Shed’s chief executive producer. “The epicness of her world in *The Breakdown* opens space for the imagination to wander freely to play and see the world in new ways. She is sexy, daring, and revolutionary. Ms. Boogie is New York personified.”

“Ms. Boogie’s *The Breakdown Odyssey* is a radical reimagining of what hip hop can be and who it includes,” said **Alex Poots**, founding artistic director of The Shed. “As we are committed to pushing artistic formats and providing a platform for visionary voices, it’s an honor to bring Ms. Boogie and her groundbreaking debut album to The Shed for two incredible concerts. She boldly sets out to redefine and expand the genre and we look forward to audiences experiencing it live in our Griffin Theater.”

TICKETS

Tickets for *The Breakdown Odyssey by Ms. Boogie* go on sale to Shed members on August 20, and to the general public on August 22 at TheShed.org.

ABOUT THE ARTIST

Ms. Boogie

Ms. Boogie, an independent artist raised in Brooklyn, New York, with Colombian and Dominican roots, is reshaping dialogues within the realm of hip hop by contributing her lived experiences as a Fem Queen (a Black trans woman). This representation was previously, and still is, lacking within the genre. *The New York Times* describes her work as “Performing and Living Fem Queen Joy.” After eight years under a previous moniker, Ms. Boogie has released her latest album, *The Breakdown*. This project, a collaboration with Black, queer creatives, blends elements of hip hop and R&B. Throughout the album’s nine tracks, she shares her personal journey while addressing broader themes of the Black trans experience in New York City and beyond. The album honors the past while embracing the future, creating a unique fusion of nostalgic and contemporary sounds.

UPCOMING AT THE SHED

Kenneth Branagh in the US premiere of a new production of Shakespeare’s *King Lear*

Performances October 26 – December 15

Set in the barbarous landscape of Ancient Britain, featuring a cast of rising stars from the Royal Academy of Dramatic Art co-directed by Rob Ashford, Branagh, and Lucy Skilbeck, this production releases the play’s power and turmoil in a fast-paced staging.

Tickets on sale now at theshed.org/kinglear.

THE SHED
THE BLOOMBERG BUILDING
545 West 30th Street
New York, NY 10001

SUPPORT



The creation of new work at The Shed is generously supported by the Lizzie and Jonathan Tisch Commissioning Fund and the Shed Commissioners.

Major support for live productions at The Shed is provided by the Charina Endowment Fund, with additional support from the New York State Council on the Arts with the support of the Office of the Governor and the New York State Legislature.

The Shed is connected by



About The Shed

Under the leadership of CEO Meredith “Max” Hodges and founding Artistic Director Alex Poots, The Shed is a cultural institution of and for the 21st century. We produce and welcome innovative art and ideas, across all forms of creativity, to build a shared understanding of our rapidly changing world and a more equitable society. In our highly adaptable building on Manhattan’s west side, The Shed brings together established and emerging artists to create new work in fields ranging from pop to classical music, painting to digital media, theater to literature, and sculpture to dance. We seek opportunities to collaborate with cultural peers and community organizations, work with like-minded partners, and provide unique spaces for private events. As an independent nonprofit that values invention, equity, and generosity, we are committed to advancing art forms, addressing the urgent issues of our time, and making our work impactful, sustainable, and relevant to the local community, the cultural sector, New York City, and beyond.

###