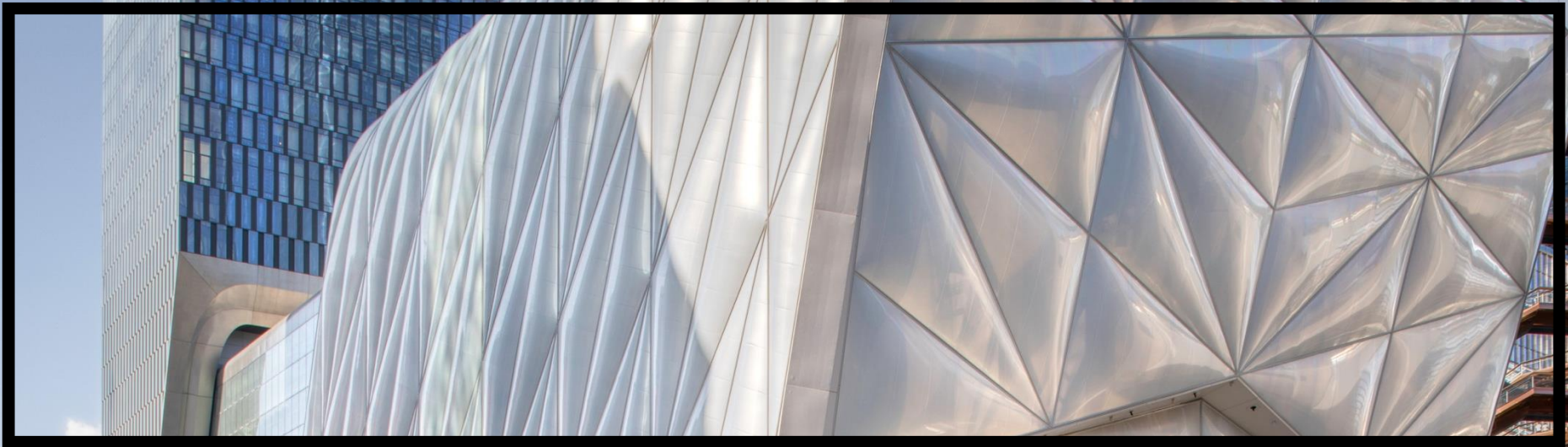


THE SHED



THE SHED

WELCOME TO THE SHED

An Arts Center for the 21st Century

The Shed is a new cultural institution of and for the 21st century. We produce and welcome innovative art and ideas, across all forms of creativity, to build a shared understanding of our rapidly changing world and a more equitable society.

In our highly adaptable building on Manhattan's west side, The Shed brings together established and emerging artists to create new work in fields ranging from pop to classical music, painting to digital media, theater to literature, and sculpture to dance. We seek opportunities to collaborate with cultural peers and community organizations, work with like-minded partners, and provide unique spaces for private events.

The Shed was designed to break with the traditions that separate art forms and audiences. By minimizing social and economic barriers to entry, we offer a warm, welcoming space for innovation and dialogue. Embracing technology, we work with creative thinkers and partners to create transformational digital experiences on-site and online. Using our flexible infrastructure and operational capabilities, we can produce performances, exhibitions, events, and gatherings of almost any type in expansive, multiuse venues that allow for social distancing. Driven by our belief that access to new art and ideas is a right, not a privilege, we present engaging experiences and forge deep bonds between our artists and audiences.

As an independent nonprofit that values invention, equity, and generosity, we are committed to advancing art forms, addressing the urgent issues of our time, and making our work impactful, sustainable, and relevant to the local community, the cultural sector, New York City, and beyond on innovative platforms.

SPACES

SPACES

The Doctoroff Lobby



The Doctoroff Lobby. Photo courtesy Broadcast Management Group.

The **Dan Doctoroff Lobby** is a welcoming space that opens to guests as they arrive at the street-level entrance on West 30th Street. It features a large glass skylight that allows guests to peer up to the High Line above and is home to Union Square Hospitality Group's **Cedric's at The Shed**.

Dimensions: 118 x 68'

Ceiling Height: 10'

Area: 7,317 SF

Capacity: 450

Notes: Full Lobby (includes Cedric's at The Shed)



The Shed 2024 Gala. Photo: Alexis Buatti-Ramos.



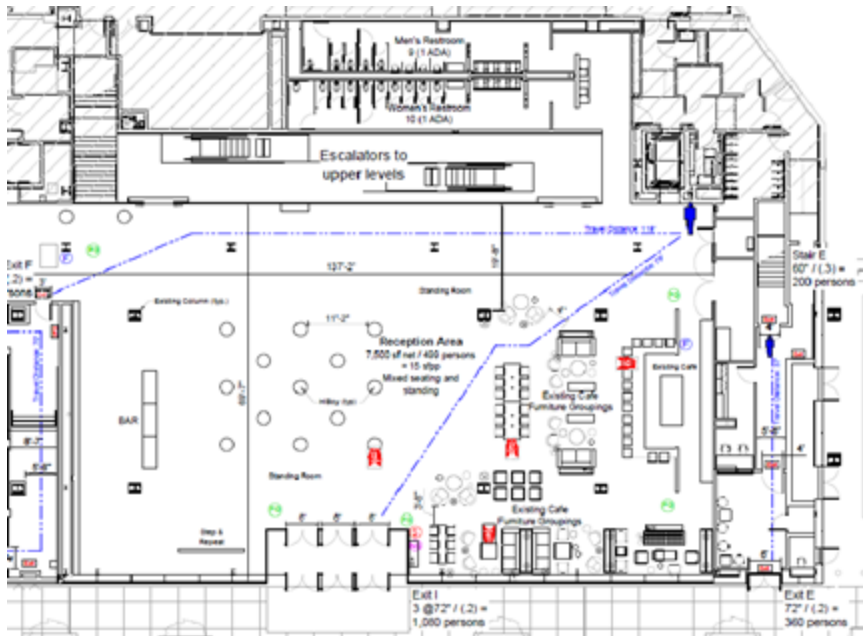
The Shed Summer Opening 2025. Photo: Alexis Buatti-Ramos.



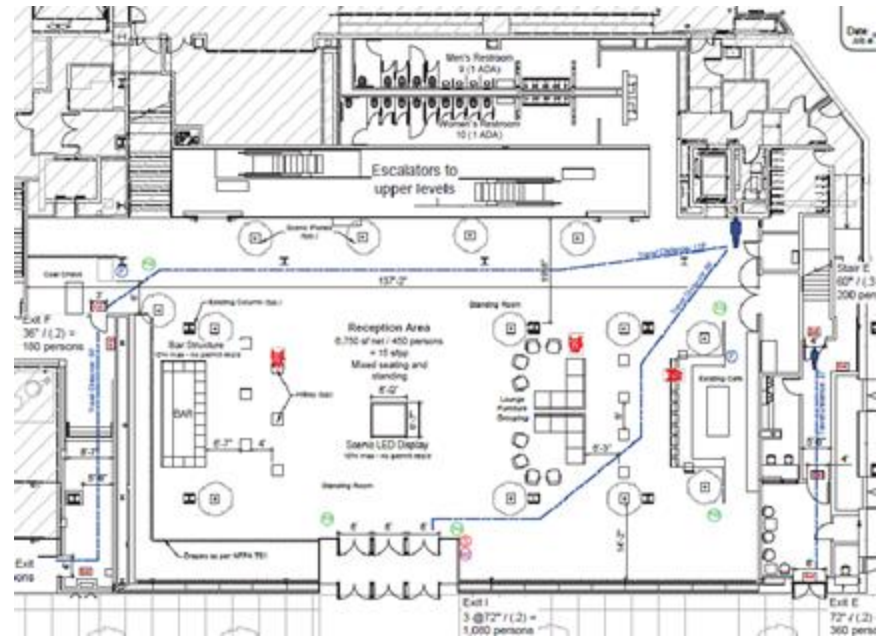
The Doctoroff Lobby. Photo: Ryan Muir.



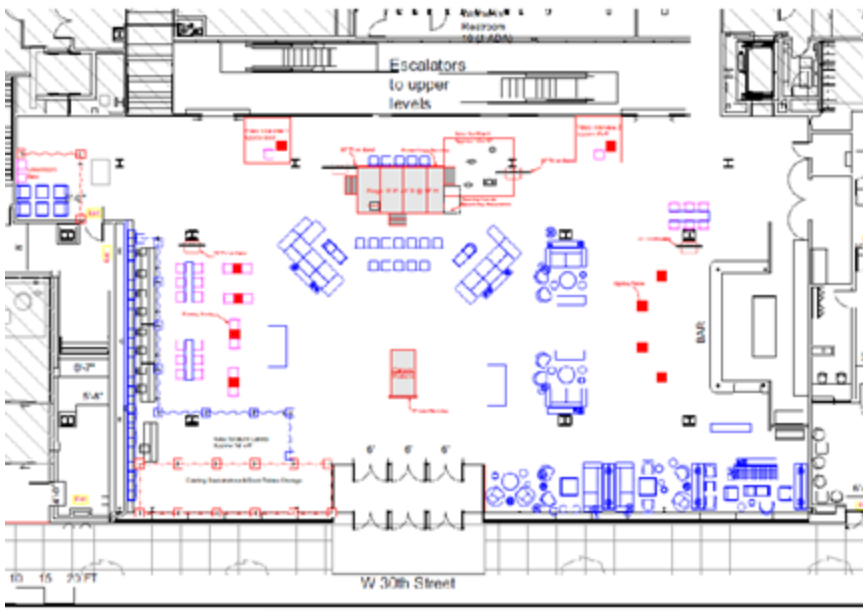
Opening night of *Misty* in The Doctoroff Lobby. Photo: Julie Skarratt.



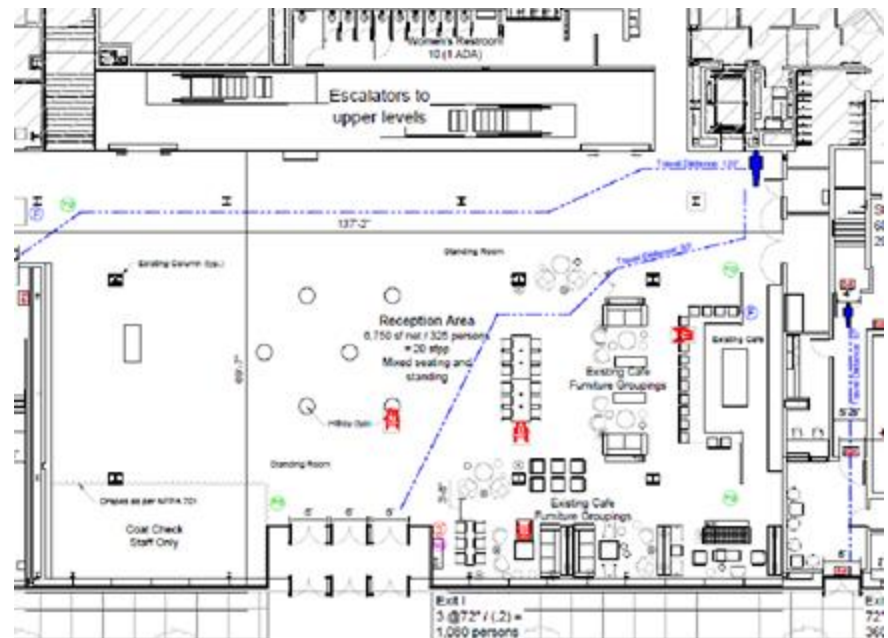
The Doctoroff Lobby set for mixed seating and standing



The Doctoroff Lobby set for mixed seating and standing



The Doctoroff Lobby set for mixed seating, standing, and a stage



The Doctoroff Lobby set for mixed seating and standing

SPACES

The McCourt



Private event in The McCourt. Photo: Ira Lippke.

The Shed's signature space, **The McCourt**, is an 18,000-square-foot venue for galas, fashion shows, award ceremonies, performances and other large-scale events. It can accommodate a seated audience of 900 and a standing audience of 1,200. The ceiling, which serves as a theatrical deck, allows for sound and light control across the entire area.

Dimensions: 139 x 130'

Ceiling Height: 110'

Area: 18,000 SF

Reception: 1,200

Theater-style: 900

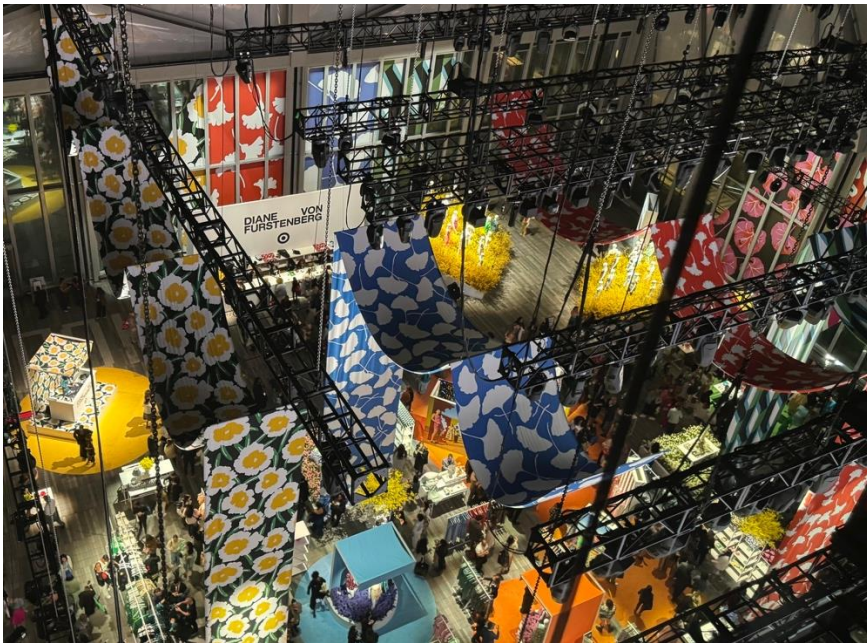
Seated Dinner: 850



Carolina Herrera, New York Fashion Week 2020. Photo: Kevin Tachman. Courtesy Carolina Herrera.



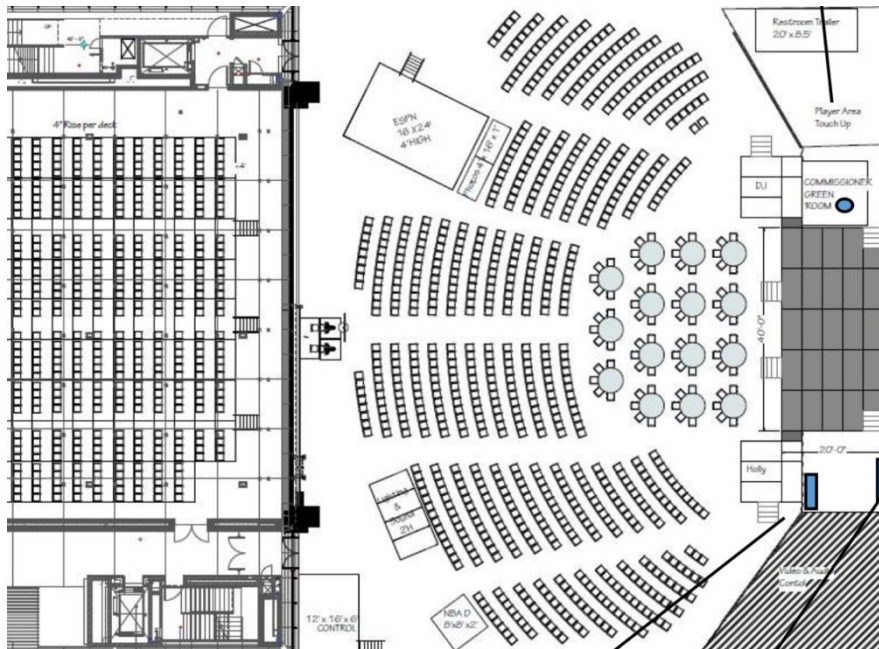
2025 WNBA Draft in The McCourt, photographed from the Overlook. Photo courtesy WNBA.



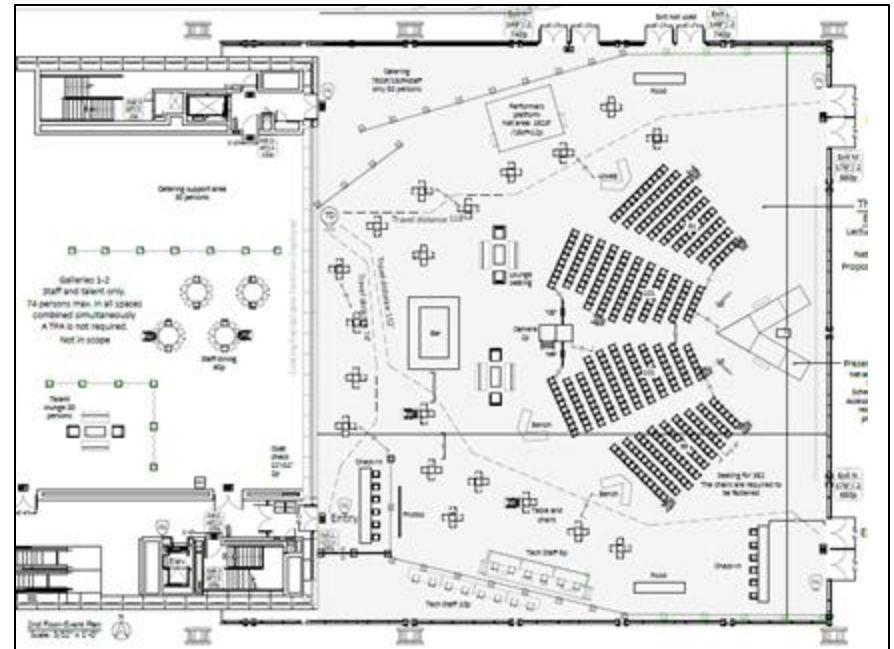
Target X Diane Von Furstenberg, March 2024. Photo: Rachel Skontrianos.



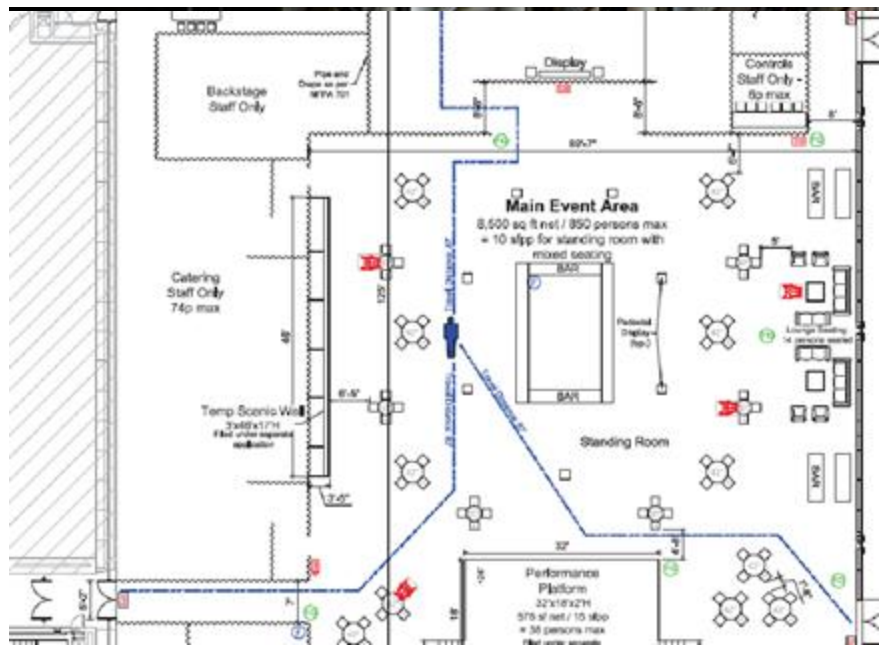
Ferrari Gala in The McCourt. Photo: Dusty Kessler. Courtesy Ferrari.



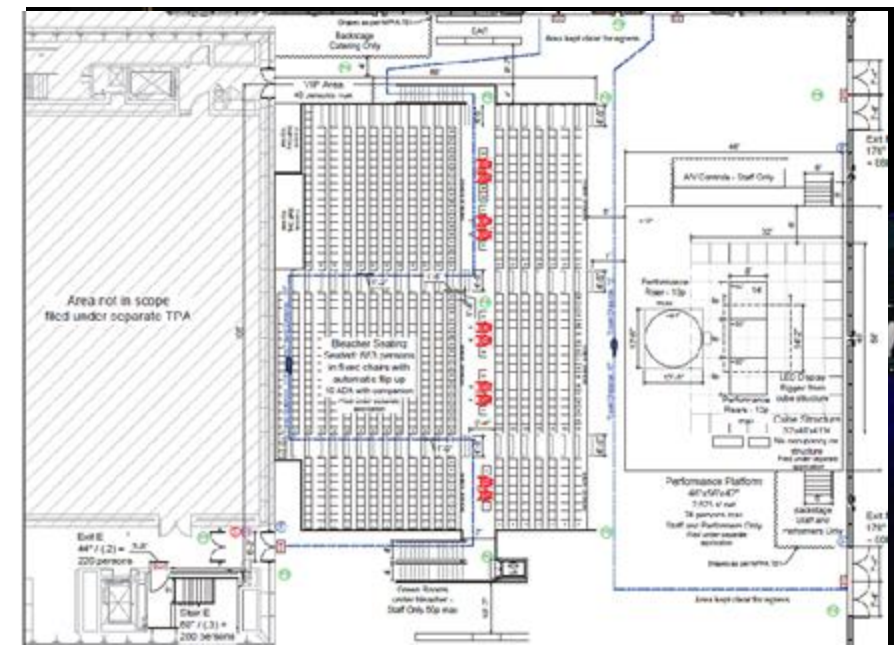
The McCourt stage and bleacher seating for 900



The McCourt stage, amphitheater style seating, and cocktails for 400



The McCourt set for cocktails, a bar, and back of house



The McCourt stage with additional platforms and bleacher seating for 900

SPACES

Galleries



The exhibition *Christo and Jeanne-Claude: The Gates and Unrealized Projects for New York City* in the Level 4 Gallery.

The Shed's column-free, museum-quality **galleries** on the second and fourth levels provide a large, open space for events. The galleries can also offer additional opportunities for engagement during events.

Dimensions:

- Level 2 Gallery: 140' x 84'
- Level 4 Gallery: 80' x 84'6"

Ceiling Height: 19'

Area:

- Level 2 Gallery: 11,584 SF
- Level 4 Gallery: 6,760 SF

Maximum Capacity

- Level 2 Gallery: 431
- Level 4 Gallery: 300



Michael Kors fashion show in the Level 2 Gallery. Photo: Angela Weiss. Courtesy Michael Kors.



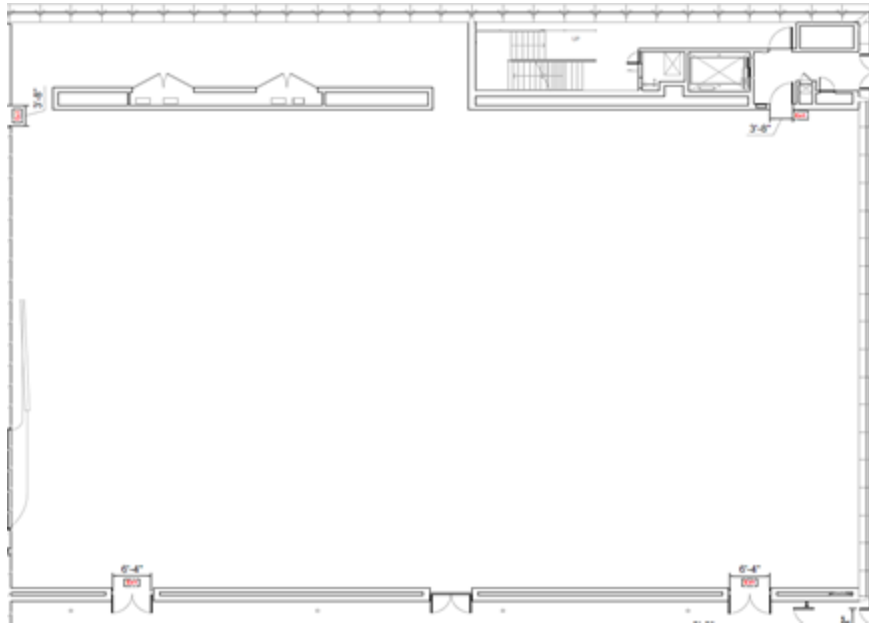
Client meeting in the Level 4 Gallery, December 2023



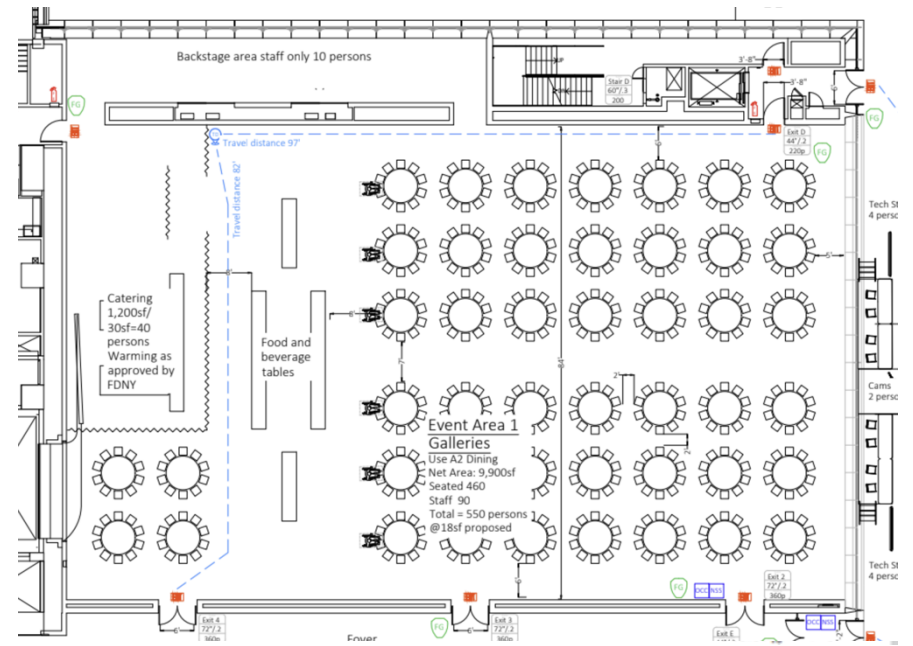
Kokai Conference in the Level 4 Gallery, 2023. Photo: Rachel Skontrianos.



Frieze New York 2025. Photo: Casey Kelbaugh. Courtesy Frieze.



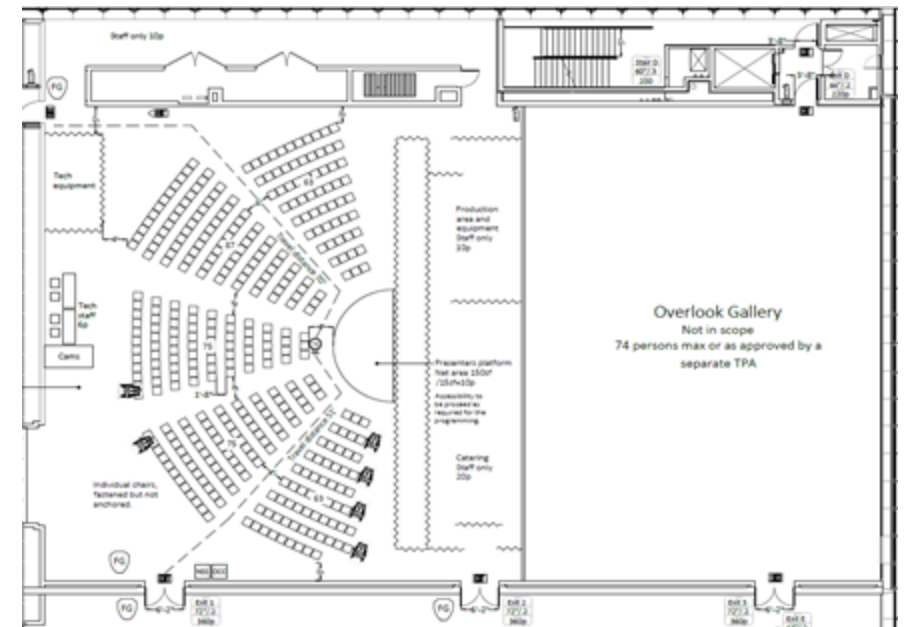
Level 2 Gallery



Level 2 Gallery with table seating for 450



Level 4 Gallery and Overlook



Level 4 Gallery stage and theater style seating for 364

SPACES

Overlook



Adjacent to the Level 4 Gallery, the **Overlook** affords spectacular views of The McCourt and The Shed's only permanent art installation *In Front of Itself* by Lawrence Weiner. The accordion-style, Bator doors can be opened to incorporate the Overlook as a mezzanine for events in The McCourt or closed to provide utmost privacy to elegant dinners, conversations and intimate receptions.

Dimensions: 85 x 56'

Ceiling Height: 19'

Area: 4,760 SF

Maximum Capacity: 350

Seated Dinner: 250



The Overlook used as mezzanine seating during the 2025 WNBA draft. Photo courtesy WNBA.



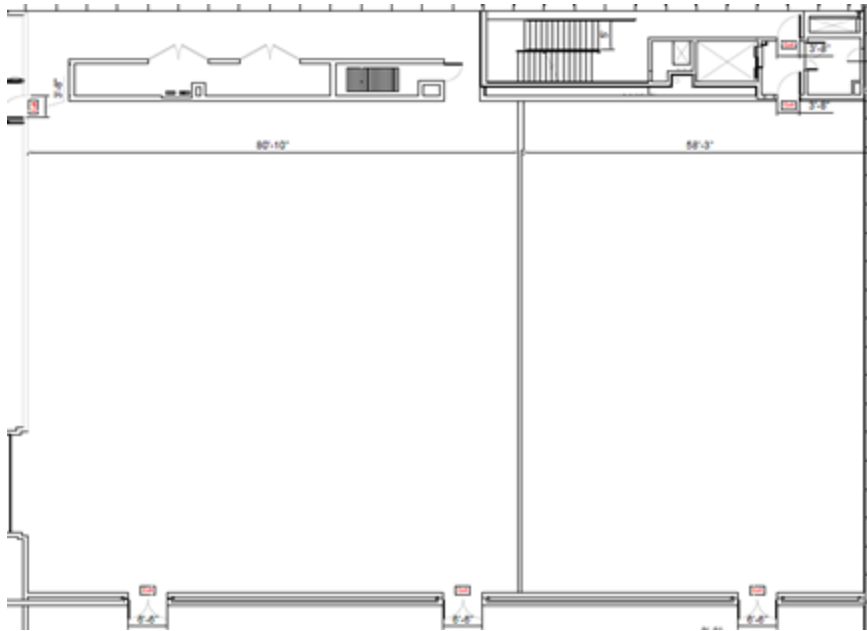
Mirro Ball reception in the Overlook: Photo: Ryan Muir.



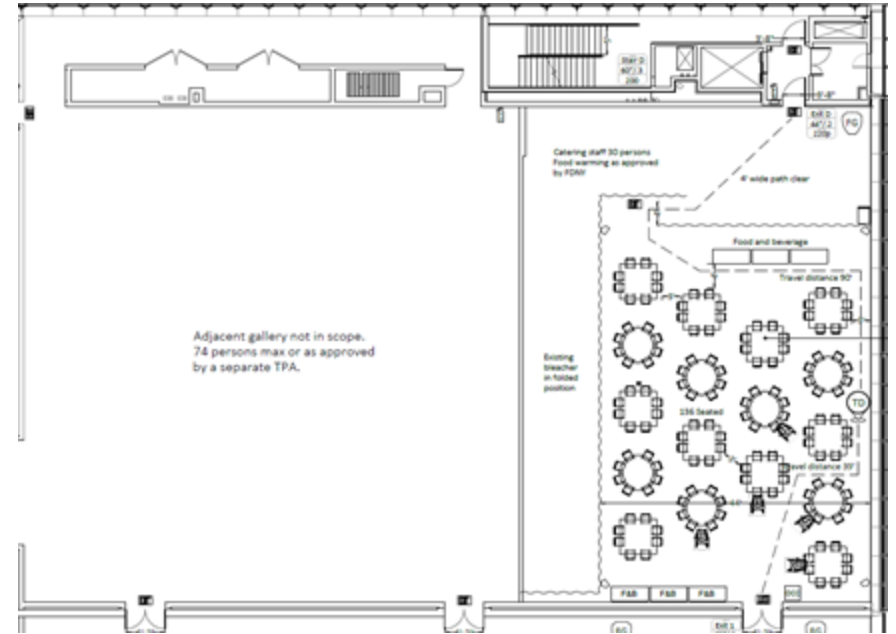
A presentation in the Overlook. Photo: Gina Dyches.



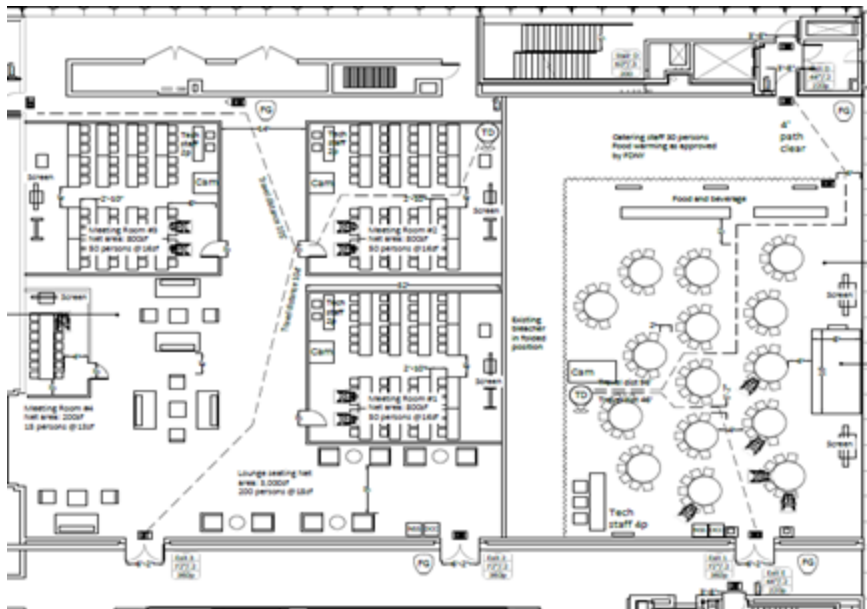
The Fire Ensemble's *Sparks* event in 2023. Photo: Noel Woodford.



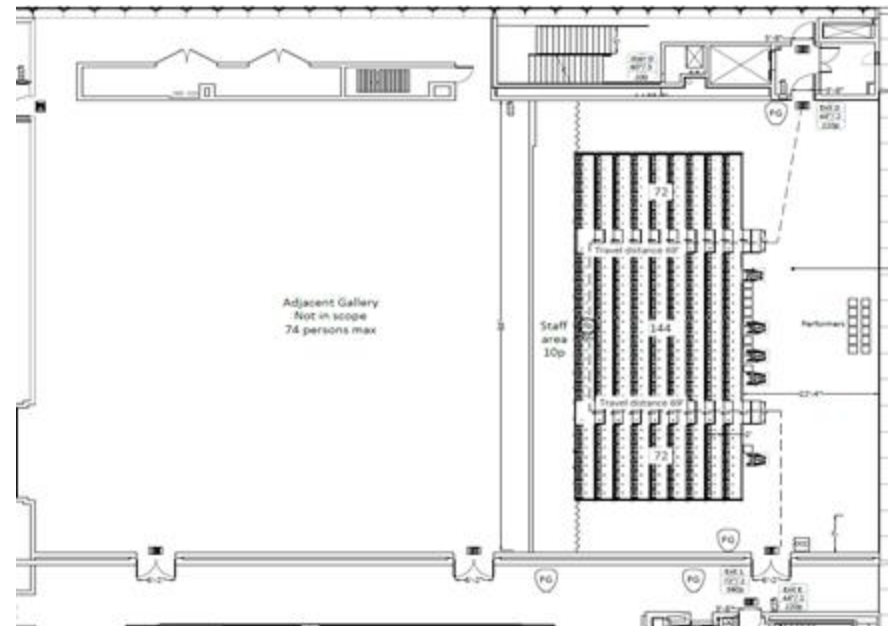
Level 4 Gallery and Overlook



The Overlook with table seating for 170



Level 4 Gallery with custom breakouts; Overlook with table seating & presentation for 105



The Overlook bleacher style seating for 288

SPACES

The Griffin Theater



The Shed's **Kenneth C. Griffin Theater** is an inviting space that can be transformed into two distinct spaces to create more intimate event settings. The Griffin Theater's flexible design can accommodate events of all types and is well suited for those that require a private and even sound-insulated environment.

Dimensions: 140 x 84'

Ceiling Height: 22'

Area: 11,760 SF

Maximum Capacity: 500

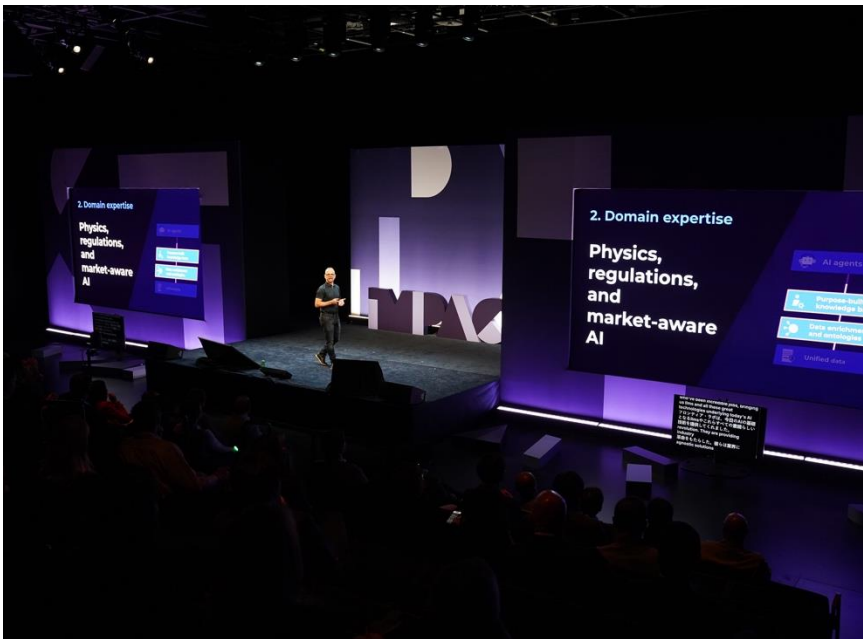
Seated Dinner: 500



Thom Browne FW25. Photo: Evan Agonstini/Invision. Courtesy Thom Browne.



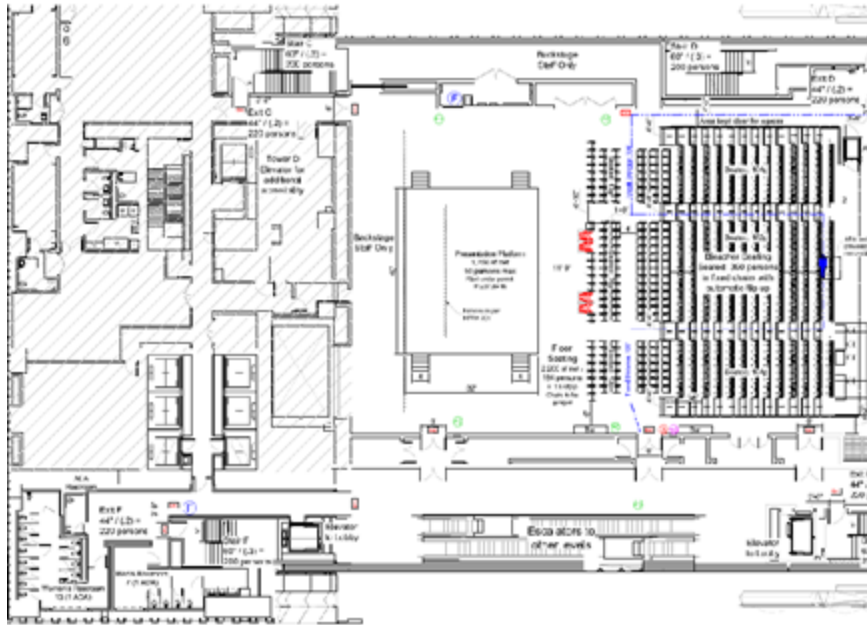
The Shed 2021 Gala. Photo: Tori Mumtaz.



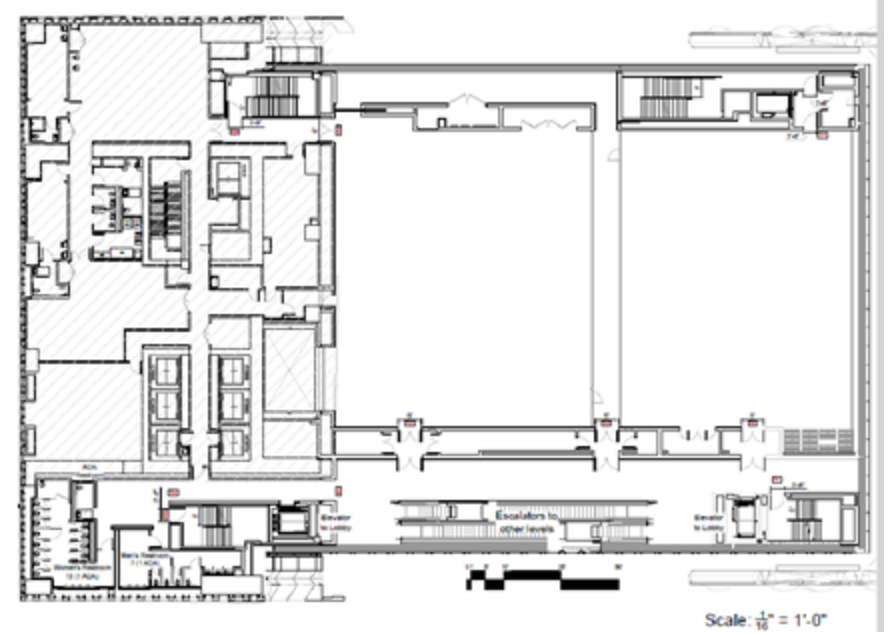
Conference main stage in The Griffin Theater. Photo: Mark McGhee.



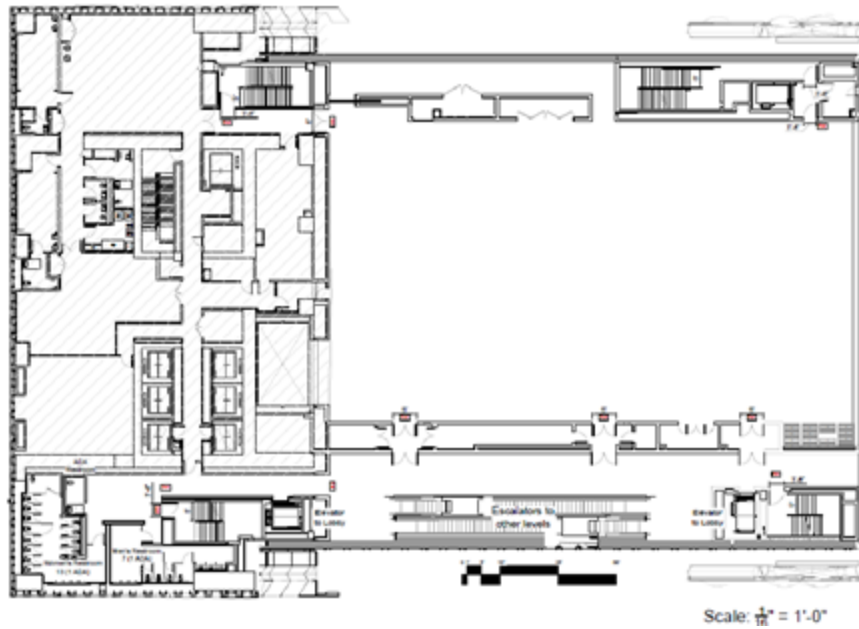
Theater seating in The Griffin Theater. Photo: Christopher Garcia Valle.



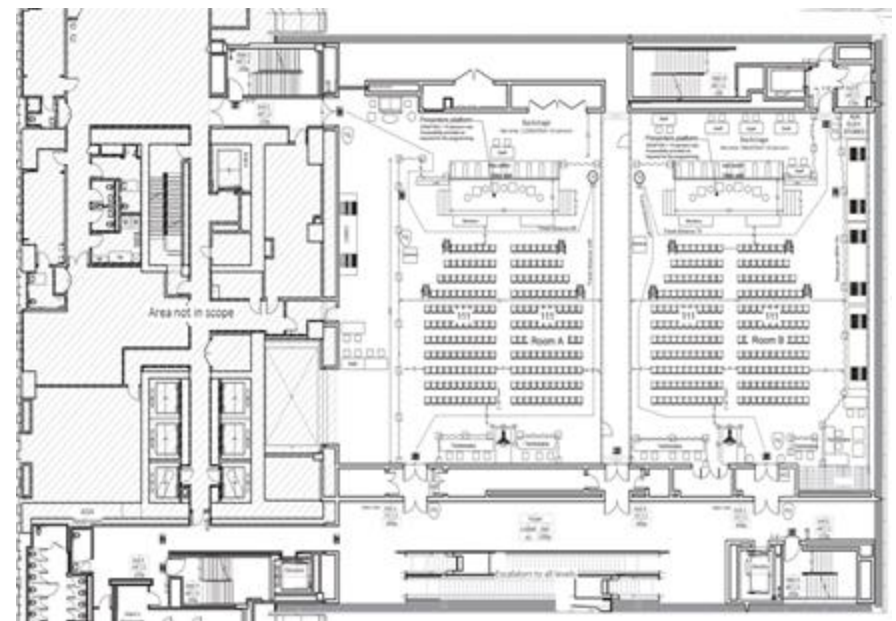
The Griffin Theater stage and bleacher seating for 400



The Griffin Theater divided into two performance spaces by pressure wall



The Griffin Theater full space



The Griffin Theater split into two spaces: each with seating for 222

SPACES

The Tisch Skylights



The Tisch Skylights . Photo: Julie Skarratt.

The Shed's top-floor event space is open to views of the city through two expansive skylights and north- and south-facing windows. The space can be partitioned with an existing air wall, and the windows and skylights are fitted with blackout options for daytime audio-visual needs. This space can transform for dinners, press events, conferences, and personal receptions.

Dimensions: 99 x 99'

Ceiling Height: 10'

Area: 9,503 SF

Reception: 600

Seated Dinner: 450



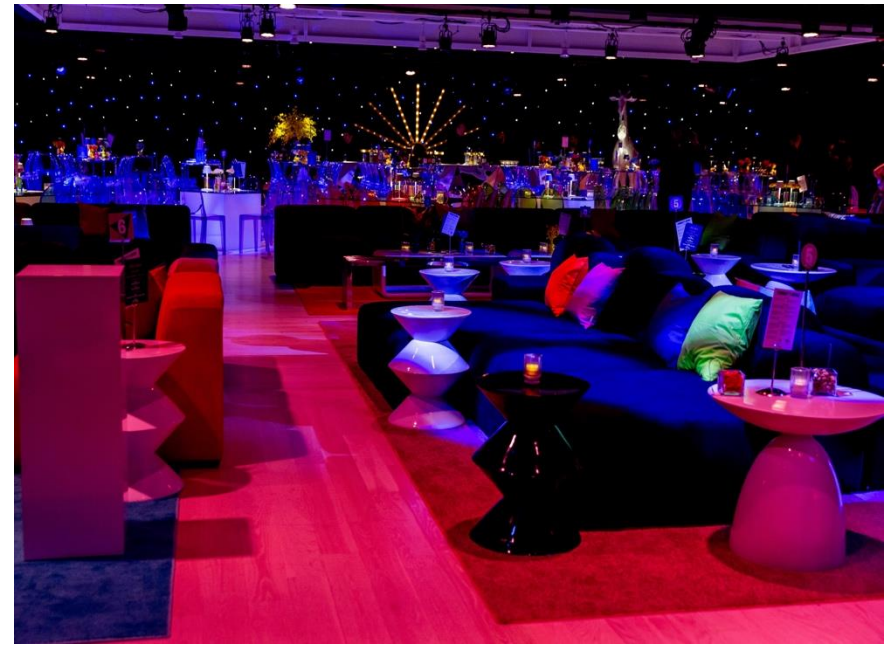
Client upfront in The Tisch Skylights.



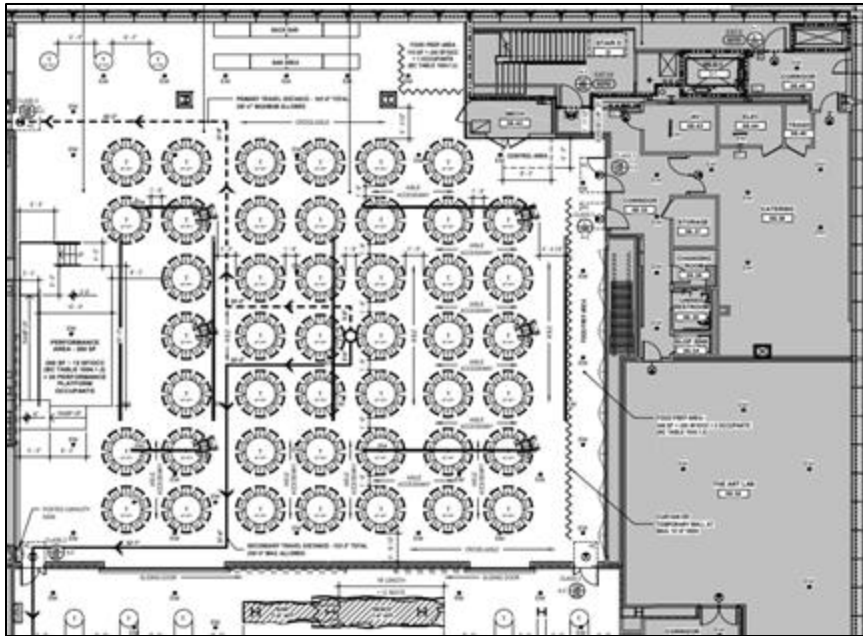
Networking space in The Tisch Skylights. Photo: Mark McGhee.



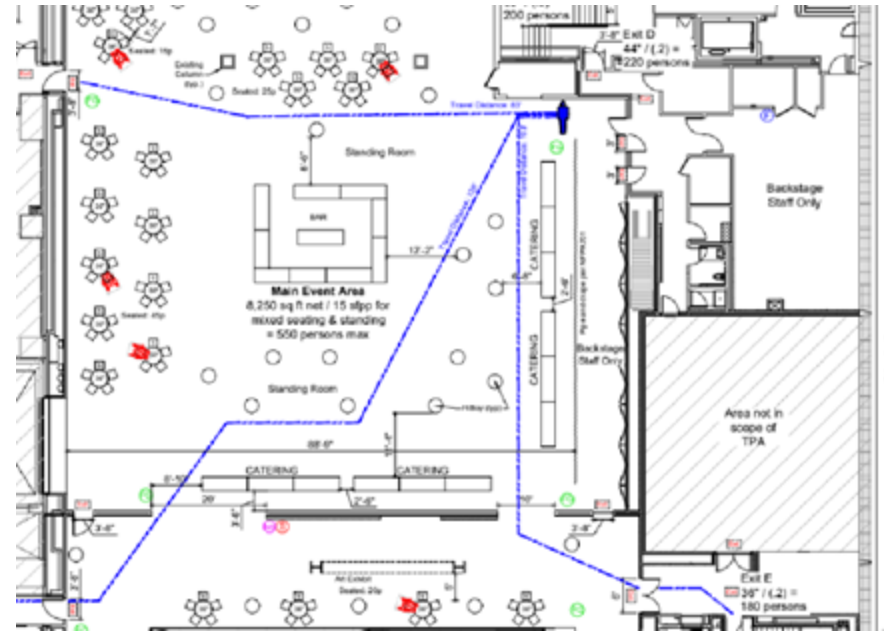
Event showcase in The Tisch Skylights. Photo: Roxxe Ireland.



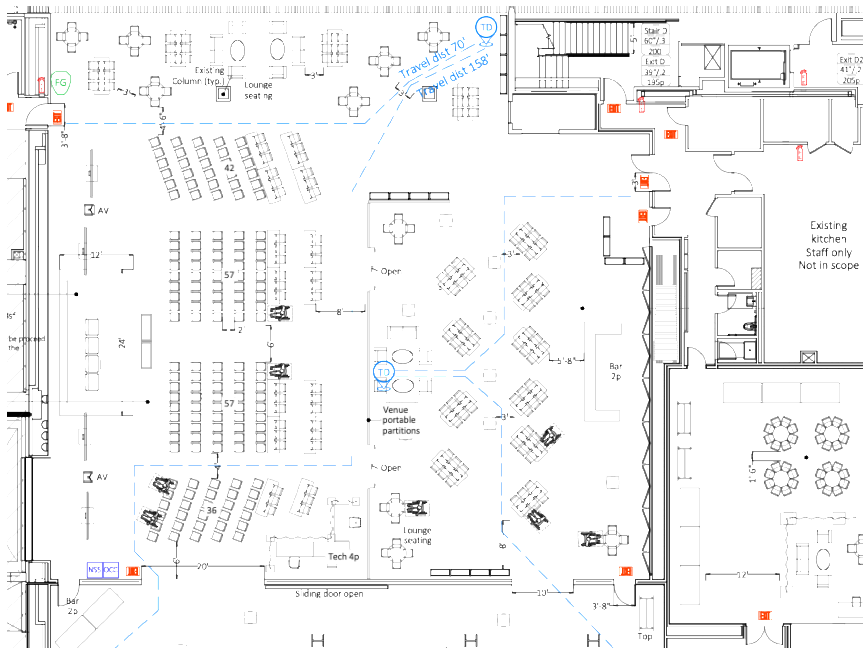
The Shed's seated dinner in The Tisch Skylights. Photo: Alexis Buatti Ramos.



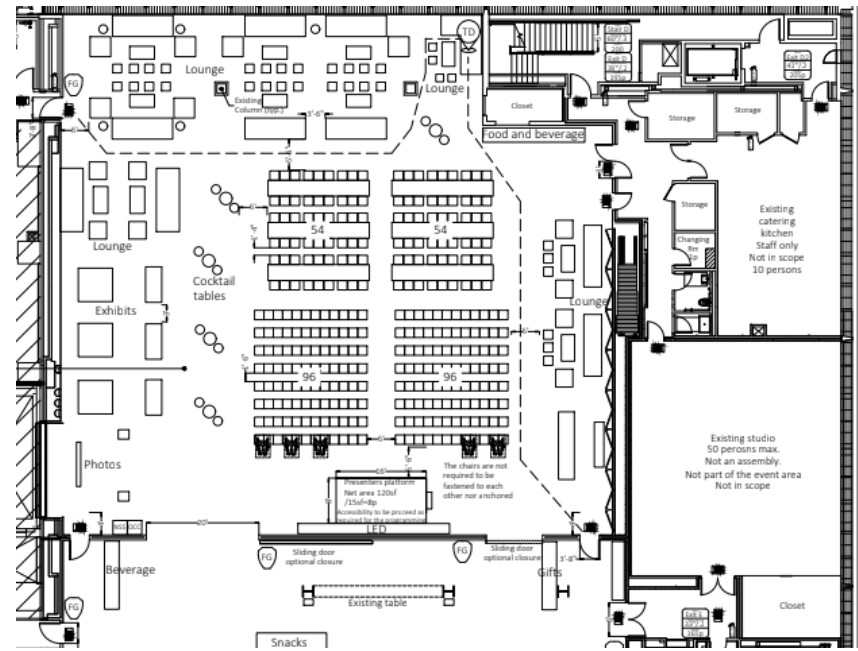
The Tisch Skylights table seating for 450



The Tisch Skylights mixed seating and standing for 550



The Tisch Skylights seating for 160 and cocktails for 200



The Tisch Skylights presentation, lounge, and expo displays for 450

SPECIFICATIONS

SPECIFICATIONS

Corporate Membership

Corporate Membership is the first step to entertaining at The Shed. Corporate Members receive a suite of year-round benefits.*



Frieze New York 2025. Photo: Casey Kelbaugh. Courtesy Frieze.

**Corporate Membership fees are waived for non-profits.*

***Entertaining benefits subject to rental fees and all direct costs*

****Subject to ticket fees.*

\$5,000 LEVEL

Entertaining Benefits in The Tisch Skylights**

\$10,000 LEVEL

Invitations to select special events

Entertaining Benefits in select Shed spaces**

\$25,000 LEVEL

Builder 1 membership for employees

One tour of an exhibition or the building for 30 guests***

Ability to book group tickets to events and productions

Two tickets to one opening night

Invitations to select special events

Entertaining Benefits in all Shed Spaces**

\$50,000 LEVEL

VIP concierge service and invitations to Shed-produced events

10% rental discount on The Tisch Skylights

Builder 1 membership for employees

One tour of an exhibition or the building for 30 guests***

Ability to book group tickets to events and productions

Two tickets to one opening night

Invitations to select special events

Entertaining Benefits in all Shed spaces**

SPECIFICATIONS

Rental Rates

Our **institutional commitment** to access and flexibility is at the core of our rental program. Please email rentals@theshed.org to learn more about pricing and entertaining at The Shed. Please note that pricing fees are subject to change.



Cocktails in the Level 4 Gallery. Photo: Bre Johnson, Jason Lowrie, Sabrina Steck/BFA.com

Corporate Rates

	\$90,000
The McCourt	\$40,000
The Griffin Theater	\$40,000
Level 2 Gallery	\$35,000
Level 4 Gallery	\$25,000**
The Overlook	\$30,000
The Tisch Skylights	\$25,000**
The Dan Doctoroff Lobby	

Nonprofit Rates*

	\$65,000
The McCourt	\$35,000
The Griffin Theater	\$35,000
Level 2 Gallery	\$30,000
Level 4 Gallery	\$20,000**
The Overlook	\$25,000
The Tisch Skylights	\$20,000**
The Dan Doctoroff Lobby	

Additional Required Fees

Cleaning	Deposit \$10,000 (refundable)
Security & Operations	Based on event guest count
Local 1 Union Labor	Based on scope of the event

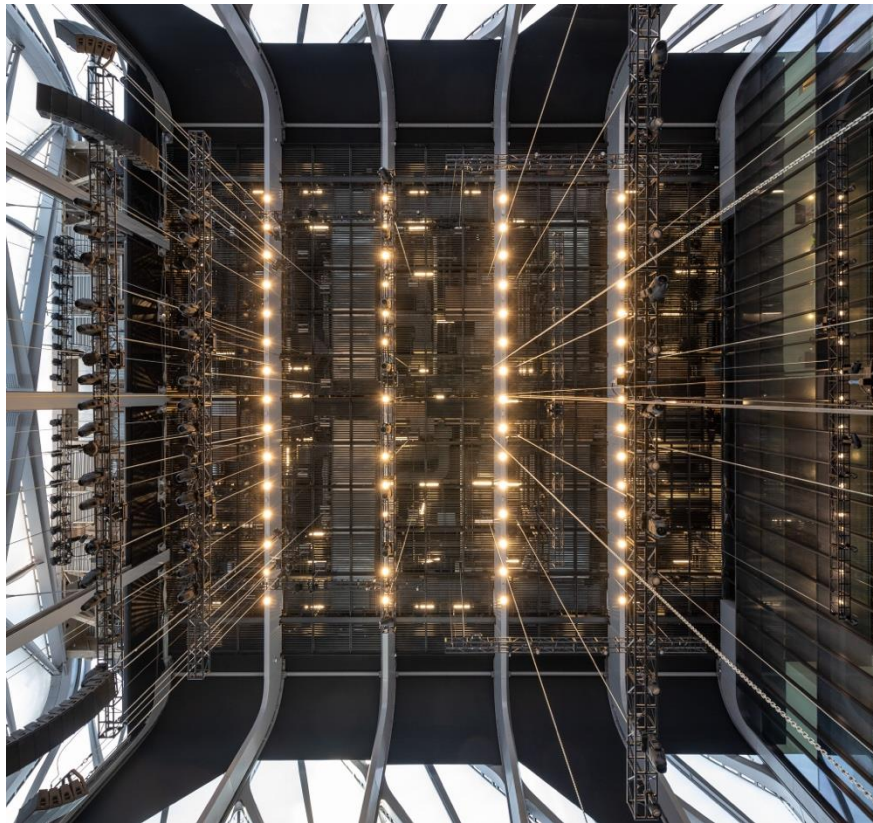
*Must provide a current 501c3 to receive this rate

**\$10,000 when combined with other spaces in the building

SPECIFICATIONS

Production & Staffing

Our team is here to help you produce a spectacular event. We hold walk-throughs for each event individually to determine unique production and front-of-house needs so you can reliably plan a seamless experience. All maintenance staff and basic facility security expenses are included in our security and operations fee, which is calculated based on your guest count.



The McCourt's lighting grid seen from the floor. Photo: Timothy Schenck.

Equipment

Each space comes with its own unique inventory of production equipment, included in the rental fee. To review all available technical options, floor plans and production logistics, please click [here](#).

Customer Service + Box Office

The Shed utilizes the ticketing software Tessitura and has a union box office. Box Office set-up and standard staffing can be added onto your venue agreement for ticketed events only. The daily rate is not inclusive of ticketing handling fees, consignment fees, credit card charges or any fees associated with late requests or expedited service requests. Please note that we do require renters to use The Shed's Box Office for all ticketing to ensure the best customer service for your patrons.

Production

The Shed is a union venue represented by IATSE Local 1 stagehands. **Stagehand labor is not included in the rental or security and operations fees.** The stagehands complete all production work for the building (can include any assembly, installation and power needs within the building) and are paid at a separate hourly rate according to our collective bargaining agreement. We walk through each event individually to determine the unique production needs and then create the labor call and invoice accordingly.

SPECIFICATIONS

Catering

Union Square Events, a New York City event catering company from Danny Meyer's Union Square Hospitality Group, is the exclusive caterer for The Shed. Union Square Hospitality Group has partnered with The Shed to create a sense of continuity and collaboration between The Shed's programming and hospitality services.



General Information

While both The Shed and Union Square Events staff commit to providing a seamless event experience, catering costs and details* are coordinated directly with their team.

Union Square Events dedicate themselves from start to finish, whether it's making event rental recommendations or drawing service floor plans. Their event expertise, exceptional menus and extensive knowledge of the building make any event at The Shed feel unique and inspired.

Shed Catering Policies

- All alcohol must be purchased through Union Square Events.
- Donated product is subject to Shed approval. If approved, the licensee is responsible for the removal of any excess product or refuse associated with the donation.
- Catering BOH rentals are exclusive to Party Rental, LTD. FOH rentals are not subject to any exclusive vendors but require Shed approval.

Contact

To learn more about Union Square Events and their offerings, please make an inquiry [here](#) or email theshed@unionsquareevents.com

*Catering estimates do not include furniture and equipment rentals coordinated by Union Square Events.

The Shed Fall Gala, 2019, in The Tisch Skylights. Photo: Scott Rudd Events.

CONTACT

Partnerships & Events



Luna Luna: *Forgotten Fantasy* in the Level 2 Gallery. Photo: Brian Ferry. Courtesy Luna Luna.

VENUE SALES & EVENTS

For more information about The Shed's rental program and event partnership opportunities, please email rentals@theshed.org.

Business Development Team

Gina Dyches, Chief of Strategic Partnerships
Des González Acevedo, Associate Director of Venue Sales
Udeme Asuquo, Assistant Manager of Venue Sales
Sonia Cisneros, Venue Sales Associate

CORPORATE MEMBERSHIP

For more information about Corporate Membership or The Shed's Corporate giving additional opportunities, please email corporate.support@theshed.org.

Corporate Partnerships Team

Susan Slotoroff, Director of Corporate Partnerships
Kevin Terwin, Associate Director of Patron Services